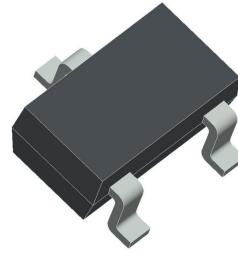


1. Finish Goods PKG photo



2. Packing method

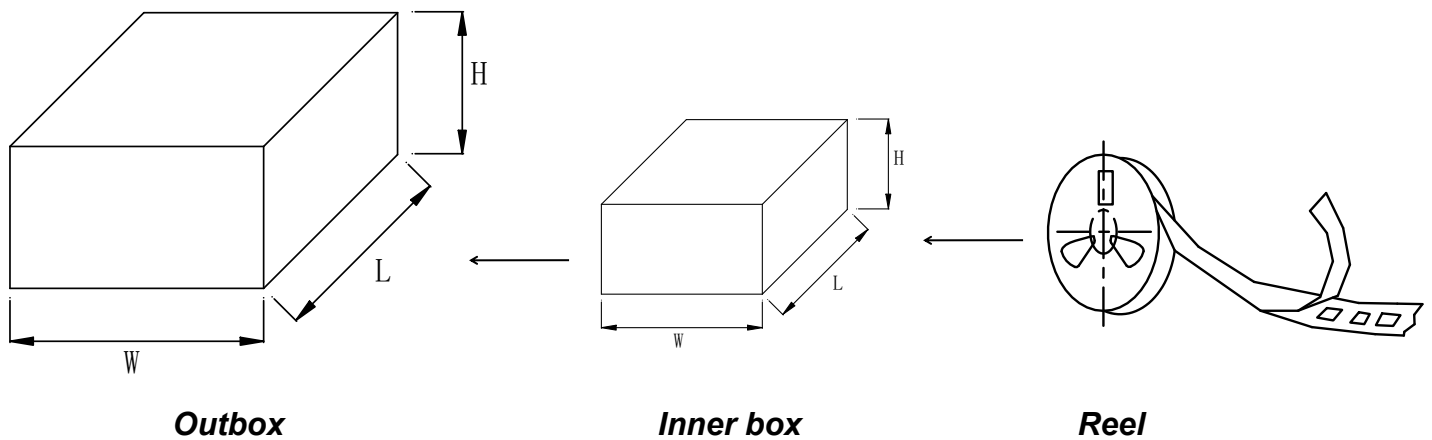


Fig.1- Reel pack for SMD

Table 1. Packing information

Package version	Reel dimensions $\phi \times H$ (mm)	Per reel (pcs)	Reels per box	Inner box dimensions L×W×H (mm)	Inner box weight (Kg)	Outer box dimensions L×W×H (mm)	Outer box (pcs)	Outer box weight (Kg)
SOT-723	$\Phi 178 \times 12.3$	8000	5	183*183*62	0.45	418*418*212	480K	6.3

3. Product orientation

Standard product orientation SOT-723

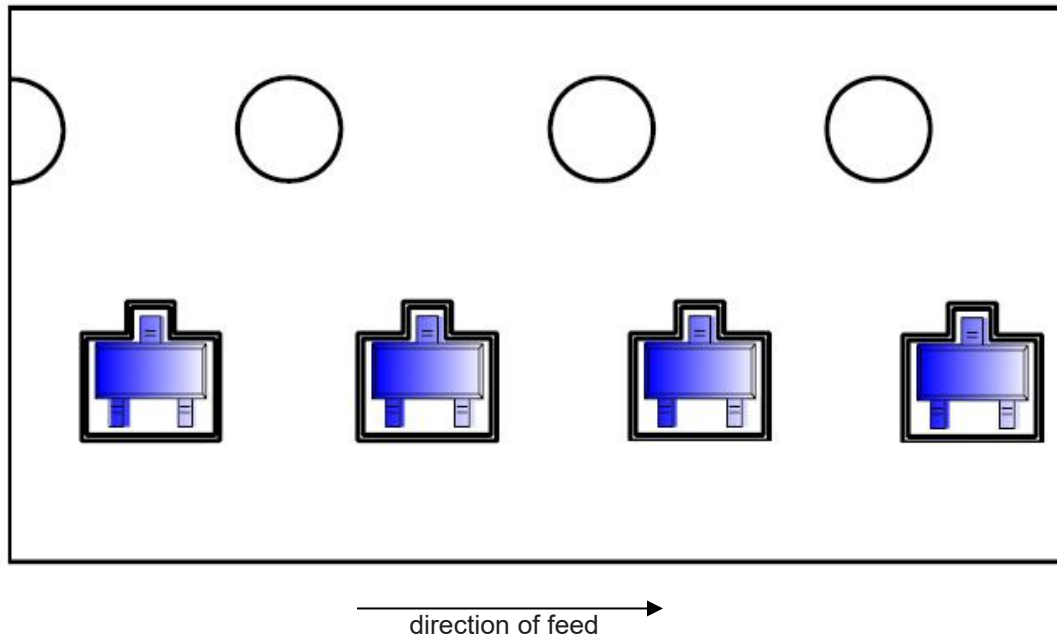


Fig 2. Product orientation in carrier tape